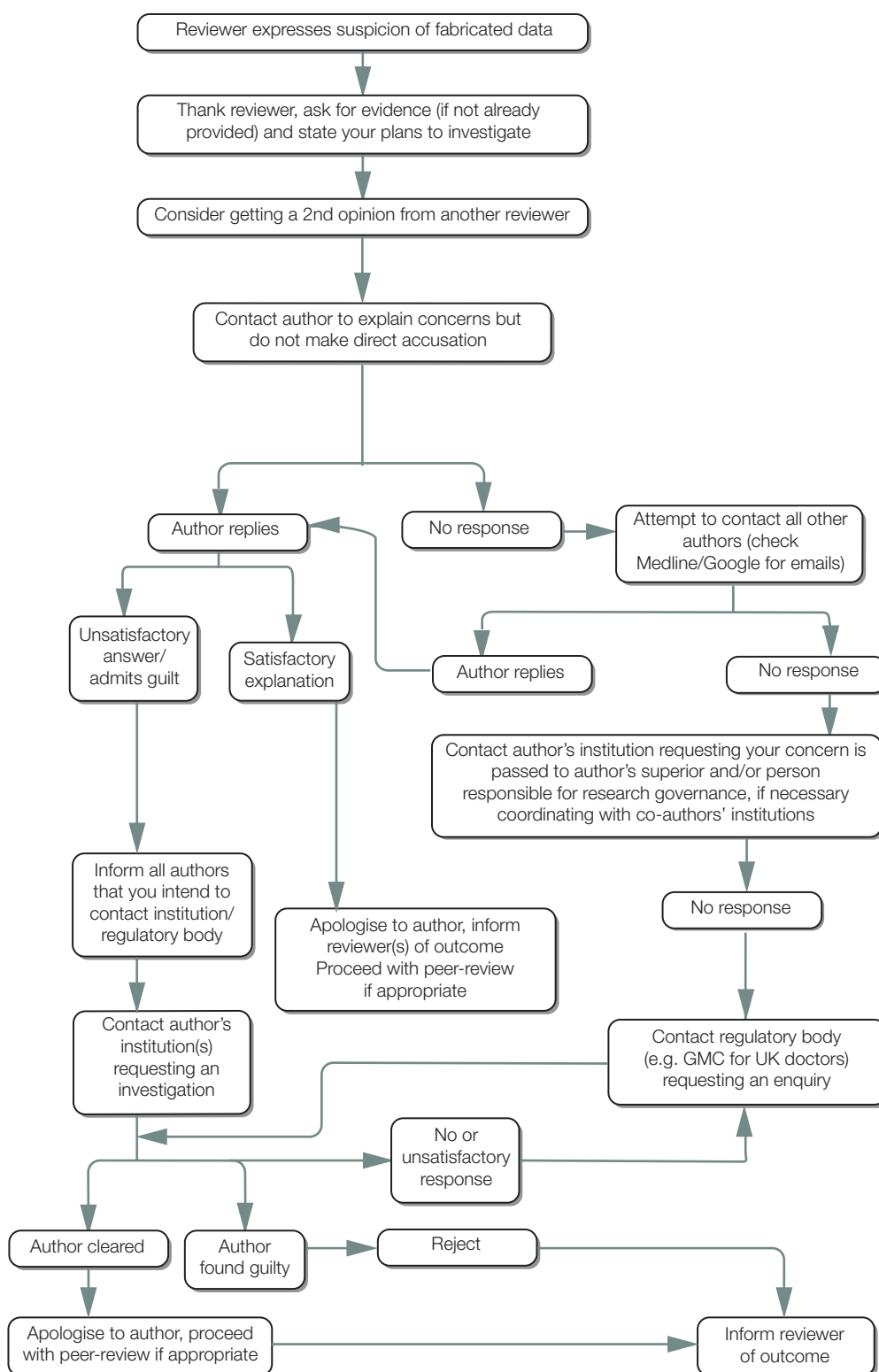


## What to do if you suspect fabricated data

### (a) Suspected fabricated data in a submitted manuscript



Developed for COPE by Liz Wager of Sideview ([www.lizwager.com](http://www.lizwager.com)) © 2013 Committee on Publication Ethics First published 2006 Revised May 2011

A non-exclusive licence to reproduce these flowcharts may be applied for by writing to: [cope\\_administrator@publicationethics.org](mailto:cope_administrator@publicationethics.org)